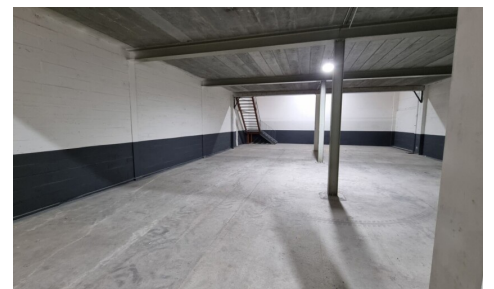


FOR SALE - SME-UNIT

Sasstraat 1, 3500 Hasselt

€ 354.571

Ref. 6999692



Availability: immediately

Surf. Living: 356m²

Surf. Plot: 356m²

DESCRIPTION

Sasstraat 1, Hasselt (Belgium) Only 1 unit available – recently renovated and ready to move in This spacious and well-equipped SME unit of 356 m² is spread over 2 levels: - 224.05 m² on the ground floor - 131.95 m² on the first floor (accessible via a fixed staircase) Perfect for entrepreneurs looking for space for storage, a workshop, light production or a showroom. Possibility of additional office space on the premises. ⚙️ Advantages - 356 m² of usable space over 2 floors - Sectional door and 7-metre clearance height on the ground floor - Skylights provide natural daylight - Insulated sandwich panels - Communal entrance gate - Communal corridor for dry loading/unloading and extra security - CCTV surveillance on enclosed site - Communal sanitary facilities - Water, electricity (including high-voltage current) and internet available - 24/7 access - Blitz Power charging stations available - Optional: additional office space on the site (not adjacent) Location & accessibility - 6.5 km from the E313 motorway - 1.7 km from the centre of Hasselt - Close to the Hasselt ring road - 180 metres from the bus stop - 3 km from Hasselt train station Ideal for entrepreneurs who need storage space and an extra floor for operations or storage Interested? This unique SME unit will be snapped up quickly! Call 03 250 12 23 or email beheer@hertsens.eu Not suitable for car-related activities Rental directly through the owner: Hertsens Vastgoed

FINANCIAL

Price: € 354.571,00

Available: Immediately

BUILDING

Surface: 356,00 m²

Fronts: 2

State: Good state

Number of floors: 1

TERRAIN

Ground area: 356,00 m²

TECHNICS

Electricity: Yes

Gas: Yes

Water: Yes

PLANNING

Destination: Not disclosed

Building permission: Not disclosed

Parcelling permission: Not disclosed

Right of pre-emption: Not disclosed

Intimation: Not disclosed

PARKING

Parkings outside: Yes

Parkings inside: No