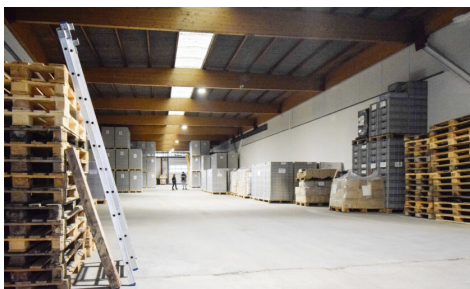


FOR RENT - SME-UNIT

Izegemsestraat 95, 8800 Roeselare

€ 2.815

Ref. 7319745



Availability: immediately

Surf. Living: 625m²

DESCRIPTION

Location and accessibility

- Strategically located along Izegemsestraat in Rumbeke:
- 1.8 km from the E403
- Easy access to industrial estates and the city center

Layout and finish

- Large, open warehouse with a clear height of approx. +6 meters
- Access via two gates at the front and rear (drive-through access)
- Completely freely configurable
- Floor with high load-bearing capacity
- Possibility of integrating office space

Technical facilities

- Electricity connection 220V + 380V high-voltage current
- Water connection available

Safety and infrastructure

- Dry, secure space
- Night lighting on the site
- Sufficient maneuvering space for freight traffic
- Parking for staff and customers
- Parking also available in the warehouse

Flexibility and scalability

- Accessible 24/7
- Suitable for logistics, e-commerce, distribution, or high-turnover storage

Directly through the owner: Hertsens Vastgoed Not permitted: car-related activities

beheer@hertsens.eu | 03 250 12 23

FINANCIAL

Price: € 2.815,00 per month

Price/m²/year: € 54,00

Available: Immediately

BUILDING

Surface: 625,00 m²

Fronts: 4

State: Good state

Type roof: Point roof

TECHNICS

Electricity: Yes

Water: No

PARKING

Garage: 0

Parkings outside: No

Parkings inside: No