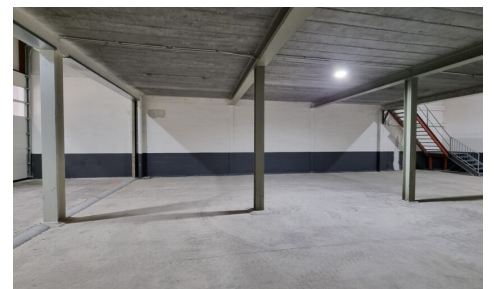
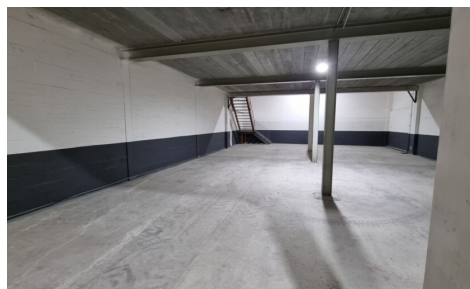


FOR RENT - SME-UNIT

Sasstraat 1, 3500 Hasselt

€ 1.864

Ref. 6999740



Availability: immediately

Surf. Living: 356m²

Surf. Plot: 356m²

DESCRIPTION

FINANCIAL

Price: € 1.864,00 per month

Available: Immediately

BUILDING

Surface: 356,00 m²

Fronts: 2

State: Good state

TERRAIN

Ground area: 356,00 m²

TECHNICS

Electricity: Yes

Gas: Yes

Water: Yes

PARKING

Parkings outside: Yes

Parkings inside: No