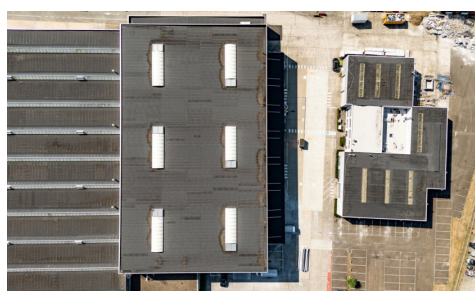
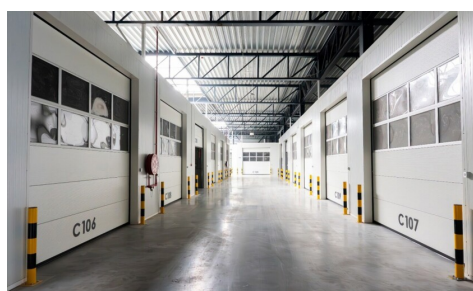


FOR RENT - SME-UNIT

Trichterheideweg 11, 3500 Hasselt

€ 284

Ref. 6992944



Availability: immediately

Surf. Living: 43m²

Surf. Plot: 43m²

DESCRIPTION

Prime location – Trichterheideweg 11, Hasselt

Only 1 km from the R71 and 5.4 km from the E313. Train station 2.3 km away and bus stop 130 m away. Easy access to the city center and industrial zone.

New and energy efficient

This new, well-insulated 43 m² warehouse has recently been completed and equipped with solar panels. Height: 6 m. Sectional door 4.2 m high and 4 m wide. Skylights provide natural daylight. Concrete floor with high load-bearing capacity.

Flexible and expandable

- Accessible 24/7
- Additional storage space or outdoor parking available
- Office space available elsewhere on the site
- Access to shared toilets
- Camera surveillance and night lighting

Technical

- 220V and 380V connections available.
- Internet available.
- Heating optional.

Rental conditions

- Rental contract from 1 year – flexible terms negotiable.
- Entry fee: 1 month's rent + 3 months' deposit.

Virtual tour available:

<https://my.3-dee.be/tour/hasselt>

beheer@hertsens.eu | 03 250 12 23

Rental directly through the owner: Hertsens Vastgoed

FINANCIAL

Price: € 284,00 per month

Available: Immediately

BUILDING

Surface: 43,00 m²

Fronts: 2

Construction year: 2024

State: Very good state

COMFORT

Elevator: Yes

TERRAIN

Ground area: 43,00 m²

TECHNICS

Electricity: Yes

Gas: Yes

Water: Yes

PARKING

Parkings outside: Yes

Parkings inside: No