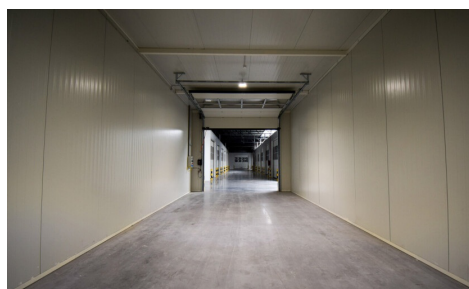
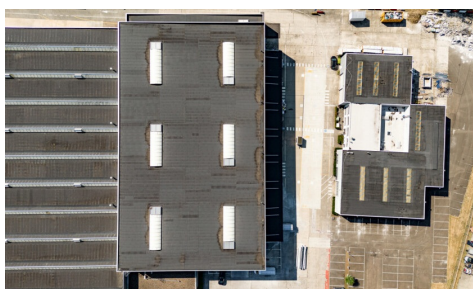


FOR RENT - SME-UNIT

Trichterheideweg 11, 3500 Hasselt

€ 397

Ref. C1.20 Larego



Availability: immediately

Surf. Living: 62m²

Surf. Plot: 62m²

DESCRIPTION

Prime location – Trichterheideweg 11, Hasselt Only 1 km from the R71 and 5.4 km from the E313. Train station 2.3 km away and bus stop 130 m away. Easy access to the city center and industrial zone. New and energy efficient This new, well-insulated 62 m² warehouse has recently been completed and equipped with solar panels. Height: 6 m. Sectional door 4.2 m high and 4 m wide. Skylights provide natural daylight. Concrete floor with high load-bearing capacity. Flexible and expandable - Accessible 24/7 - Additional storage space or outdoor parking available - Office space available elsewhere on the site - Access to shared toilets - Camera surveillance and night lighting Technical - 220V and 380V connections available. - Internet available. - Heating optional. Rental conditions - Rental contract from 1 year – flexible terms negotiable. - Entry fee: 1 month's rent + 3 months' deposit. Virtual tour available: [https://my.3-dee.be/tour/hasselt beheer@hertsens.eu](https://my.3-dee.be/tour/hasselt%20beheer@hertsens.eu) | 03 250 12 23 Rental directly through the owner: Hertsens Vastgoed

FINANCIAL

Price: € 397,00 per month
Available: Immediately

BUILDING

Surface: 62,00 m²
Fronts: 2
Construction year: 2024
State: Very good state

COMFORT

Elevator: Yes

TERRAIN

Ground area: 62,00 m²

TECHNICS

Electricity: Yes
Gas: Yes
Water: Yes

PARKING

Parkings outside: Yes
Parkings inside: No